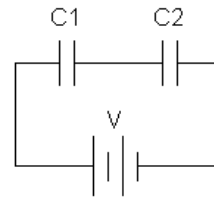
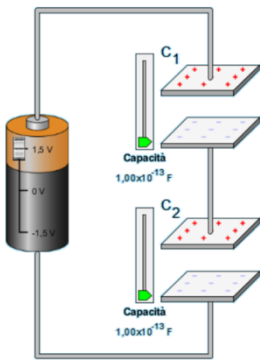
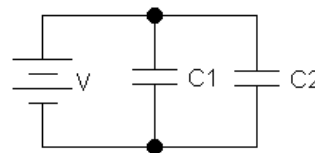
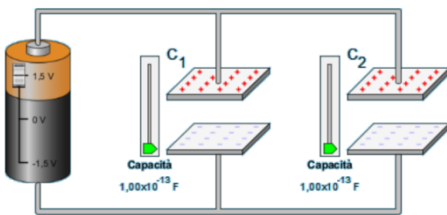


Condensatori in serie



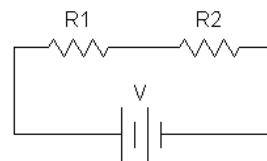
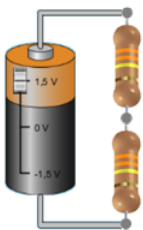
$$C_{Totale(serie)} = \frac{C_1 \cdot C_2}{C_1 + C_2}$$

Condensatori in parallelo



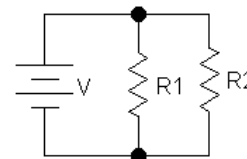
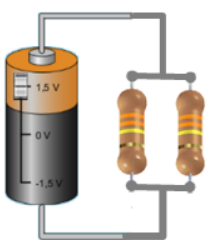
$$C_{Totale(parallelo)} = C_1 + C_2$$

Resistenze in serie



$$R_{Totale(serie)} = R_1 + R_2$$

Resistenze in parallelo



$$R_{Totale(parallelo)} = \frac{R_1 \cdot R_2}{R_1 + R_2}$$

prefisso	simbolo	Valore
kilo	k	10^3
Mega	M	10^6
Giga	G	10^9
Tera	T	10^{12}

prefisso	simbolo	Valore
milli	m	10^{-3}
micro	μ	10^{-6}
nano	n	10^{-9}
pico	p	10^{-12}